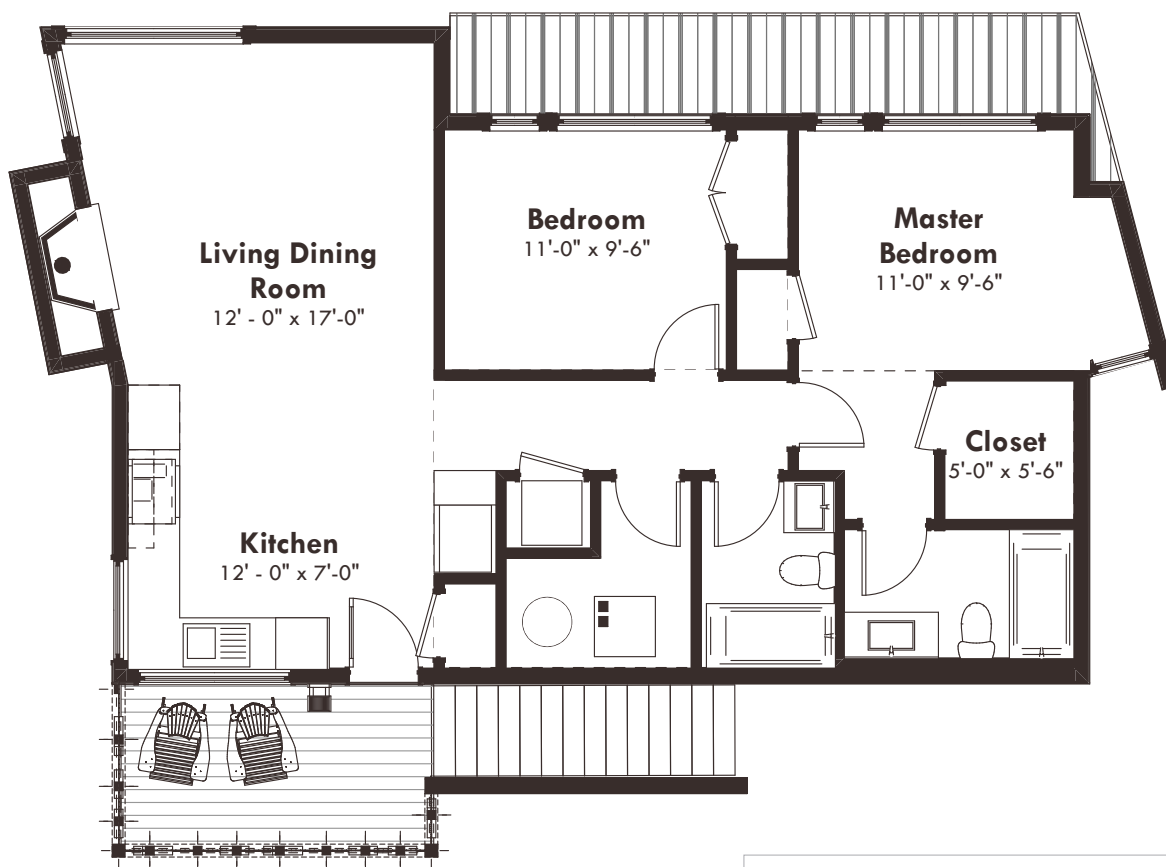


THE SLOPES

AT STEWART CREEK

Unparalleled Design
FOR UNPARALLELED LIVING

Alpine Loft



UNITS 3,6,9,24 LIVING ROOM ON NORTH
UNITS 20,25,30,35 LIVING ROOM ON SOUTH

GROSS SQUARE FOOTAGE

UPPER LEVEL LIVING.....	860
GARAGE	260
STORAGE	40
*TOTAL	1160

*Estimated. Upper level includes mechanical.

DEVONIAN

The above illustration is for information purposes only and is not a true representation of the final project. The Developer reserves the right to alter or change and or substitute appliance and lighting models, interior finishes and or materials with alternatives that are of like or similar quality. Any indication of dimensions is for information purposes only and may vary at construction and installation at the Developer's discretion. The Developer reserves the right to make changes to the floor plans, project design, specifications & interiors and exterior landscaping.

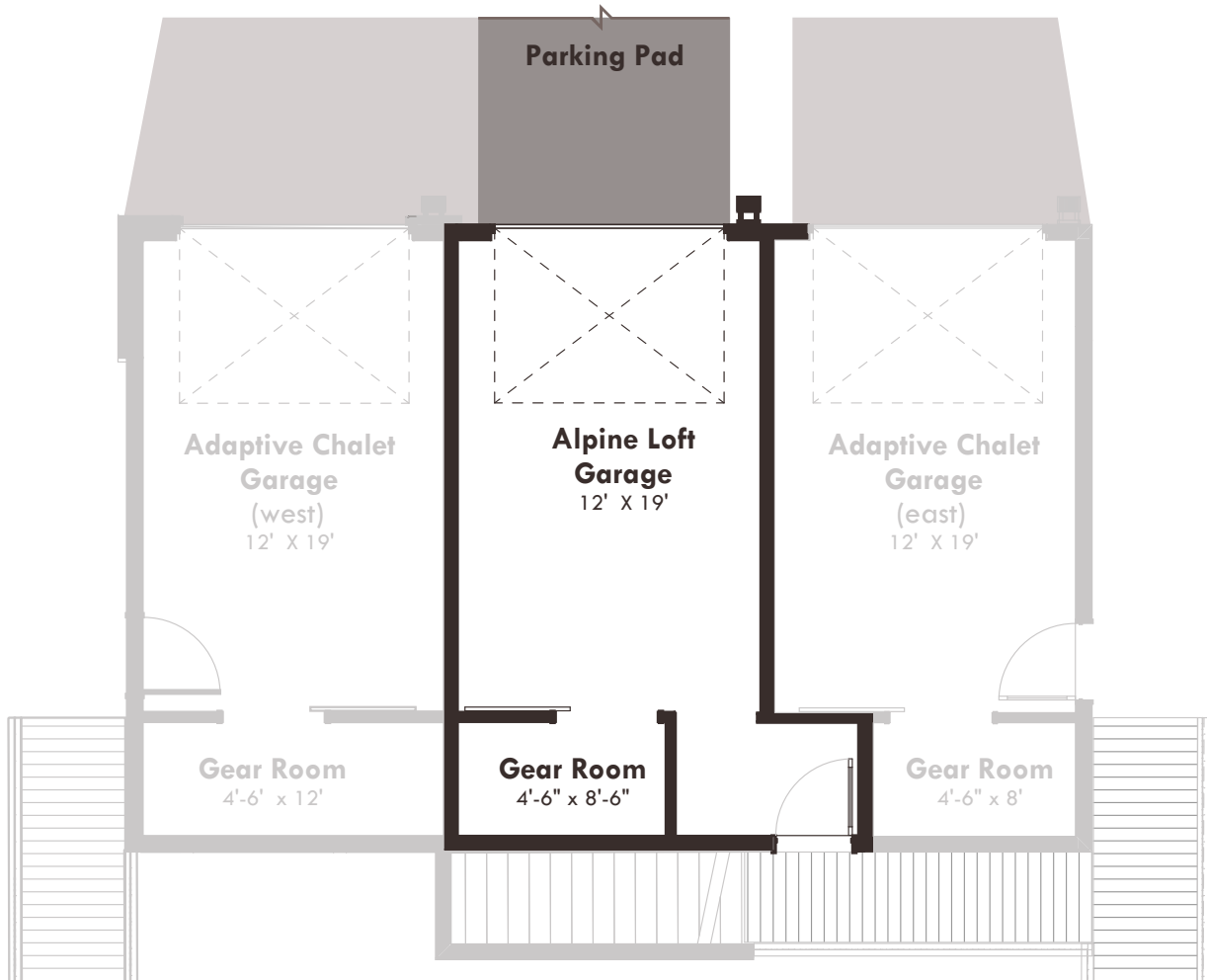
***FINAL DIMENSIONS, SQUARE FOOTAGE ESTIMATES, INDICATED MEASUREMENTS, FLOOR PLANS AND PROJECT CONFIGURATION MAY VARY AND MAY VARY FROM OTHER MEASUREMENT STANDARDS SUCH AS RECA'S RMS**

THE SLOPES

AT STEWART CREEK

Unparalleled Design
FOR UNPARALLELED LIVING

Alpine Loft — Garage



GROSS SQUARE FOOTAGE

UPPER LEVEL LIVING.....	860
GARAGE	260
STORAGE	40
*TOTAL	1160

*Estimated. Upper level includes mechanical.

DEVONIAN

The above illustration is for information purposes only and is not a true representation of the final project. The Developer reserves the right to alter or change and or substitute appliance and lighting models, interior finishes and or materials with alternatives that are of like or similar quality. Any indication of dimensions is for information purposes only and may vary at construction and installation at the Developer's discretion. The Developer reserves the right to make changes to the floor plans, project design, specifications & interiors and exterior landscaping.

***FINAL DIMENSIONS, SQUARE FOOTAGE ESTIMATES, INDICATED MEASUREMENTS, FLOOR PLANS AND PROJECT CONFIGURATION MAY VARY AND MAY VARY FROM OTHER MEASUREMENT STANDARDS SUCH AS RECA'S RMS**