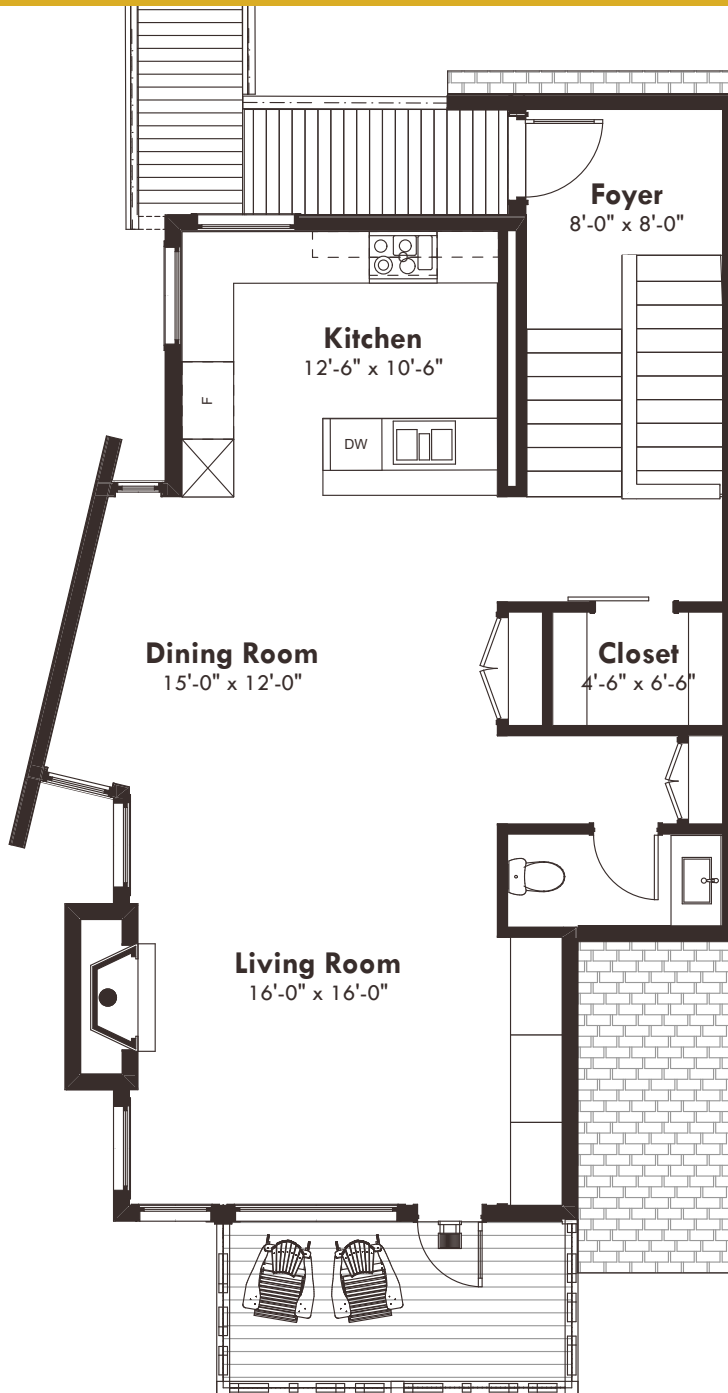


# THE SLOPES

AT STEWART CREEK

*Unparalleled Design*  
FOR UNPARALLELED LIVING

## Adaptive Chalet (West\*) — Upper Level



### GROSS SQUARE FOOTAGE

UPPER LEVEL.....	825
MAIN LEVEL.....	880
LOWER LEVEL.....	225
GARAGE, STORAGE.....	280
<b>**TOTAL .....</b>	<b>2,210</b>

\*\*Estimates. Lower level includes access, storage and mechanical.

\*EAST UNITS ARE REVERSE OF WEST UNITS

DEVONIAN

The above illustration is for information purposes only and is not a true representation of the final project. The Developer reserves the right to alter or change and or substitute appliance and lighting models, interior finishes and or materials with alternatives that are of like or similar quality. Any indication of dimensions is for information purposes only and may vary at construction and installation at the Developer's discretion. The Developer reserves the right to make changes to the floor plans, project design, specifications & interiors and exterior landscaping.

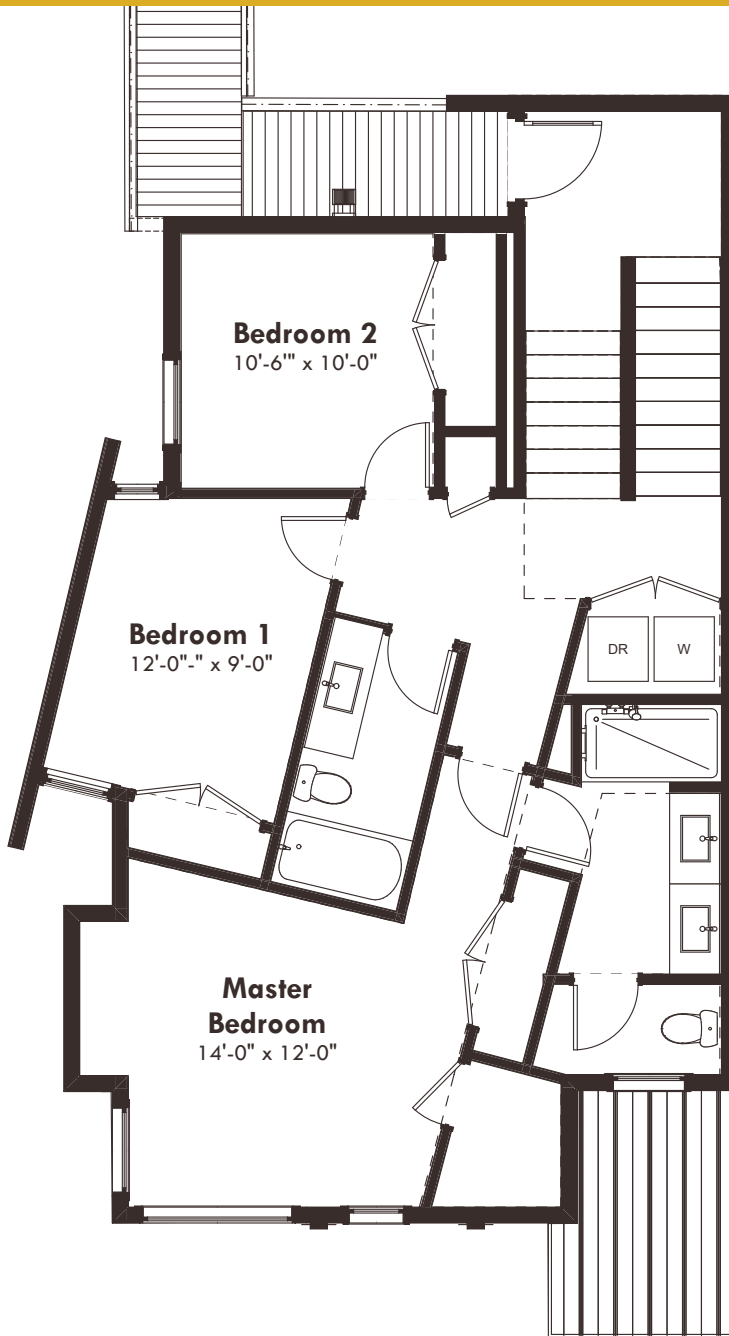
**\*FINAL DIMENSIONS, SQUARE FOOTAGE ESTIMATES, INDICATED MEASUREMENTS, FLOOR PLANS AND PROJECT CONFIGURATION MAY VARY AND MAY VARY FROM OTHER MEASUREMENT STANDARDS SUCH AS RECA'S RMS**

# THE SLOPES

AT STEWART CREEK

*Unparalleled Design*  
FOR UNPARALLELED LIVING

## Adaptive Chalet (West\*) — Main Level



### GROSS SQUARE FOOTAGE

UPPER LEVEL.....	825
MAIN LEVEL.....	880
LOWER LEVEL.....	225
GARAGE, STORAGE.....	280
<b>**TOTAL .....</b>	<b>2,210</b>

\*\*Estimates. Lower level includes access, storage and mechanical.

\*EAST UNITS ARE REVERSE OF WEST UNITS

DEVONIAN

The above illustration is for information purposes only and is not a true representation of the final project. The Developer reserves the right to alter or change and or substitute appliance and lighting models, interior finishes and or materials with alternatives that are of like or similar quality. Any indication of dimensions is for information purposes only and may vary at construction and installation at the Developer's discretion. The Developer reserves the right to make changes to the floor plans, project design, specifications & interiors and exterior landscaping.

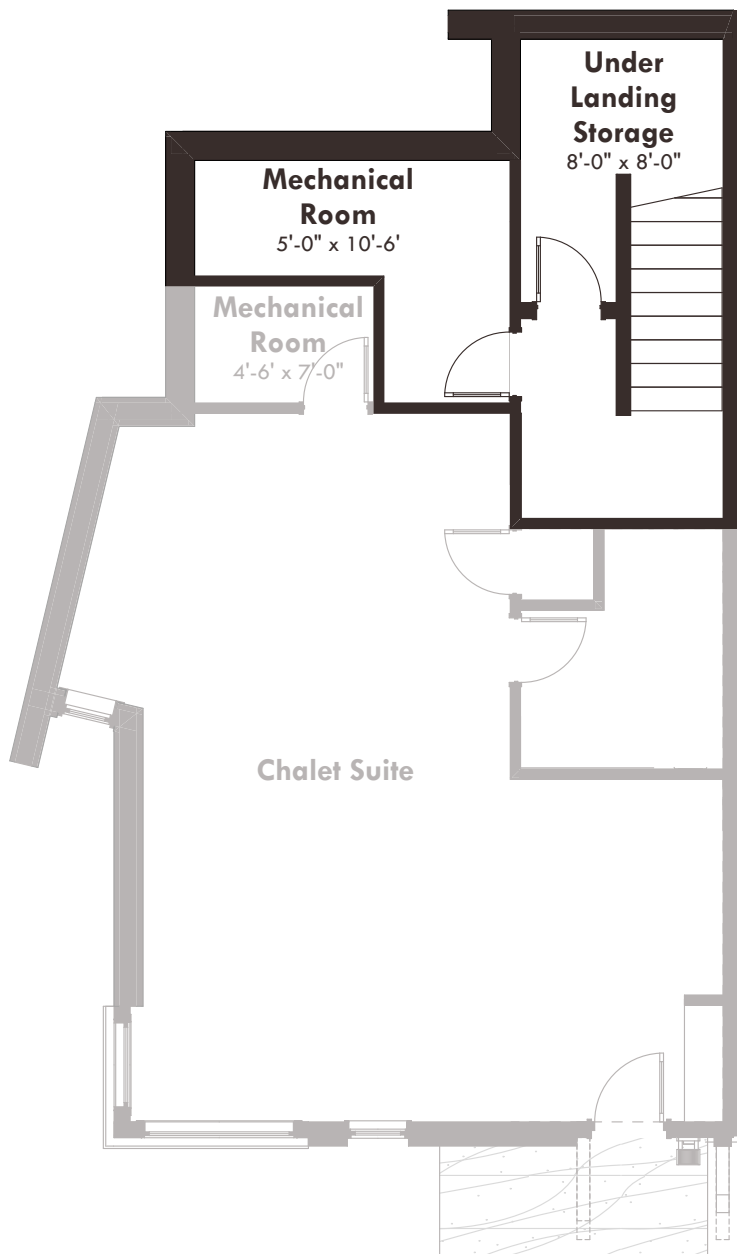
**\*FINAL DIMENSIONS, SQUARE FOOTAGE ESTIMATES, INDICATED MEASUREMENTS, FLOOR PLANS AND PROJECT CONFIGURATION MAY VARY AND MAY VARY FROM OTHER MEASUREMENT STANDARDS SUCH AS RECA'S RMS**

# THE SLOPES

AT STEWART CREEK

*Unparalleled Design*  
FOR UNPARALLELED LIVING

## Adaptive Chalet (West\*) — Lower Level



### GROSS SQUARE FOOTAGE

UPPER LEVEL.....	825
MAIN LEVEL.....	880
LOWER LEVEL.....	225
GARAGE, STORAGE.....	280
<b>**TOTAL .....</b>	<b>2,210</b>

\*\*Estimates. Lower level includes access, storage and mechanical.

\*EAST UNITS ARE REVERSE OF WEST UNITS

DEVONIAN

The above illustration is for information purposes only and is not a true representation of the final project. The Developer reserves the right to alter or change and or substitute appliance and lighting models, interior finishes and or materials with alternatives that are of like or similar quality. Any indication of dimensions is for information purposes only and may vary at construction and installation at the Developer's discretion. The Developer reserves the right to make changes to the floor plans, project design, specifications & interiors and exterior landscaping.

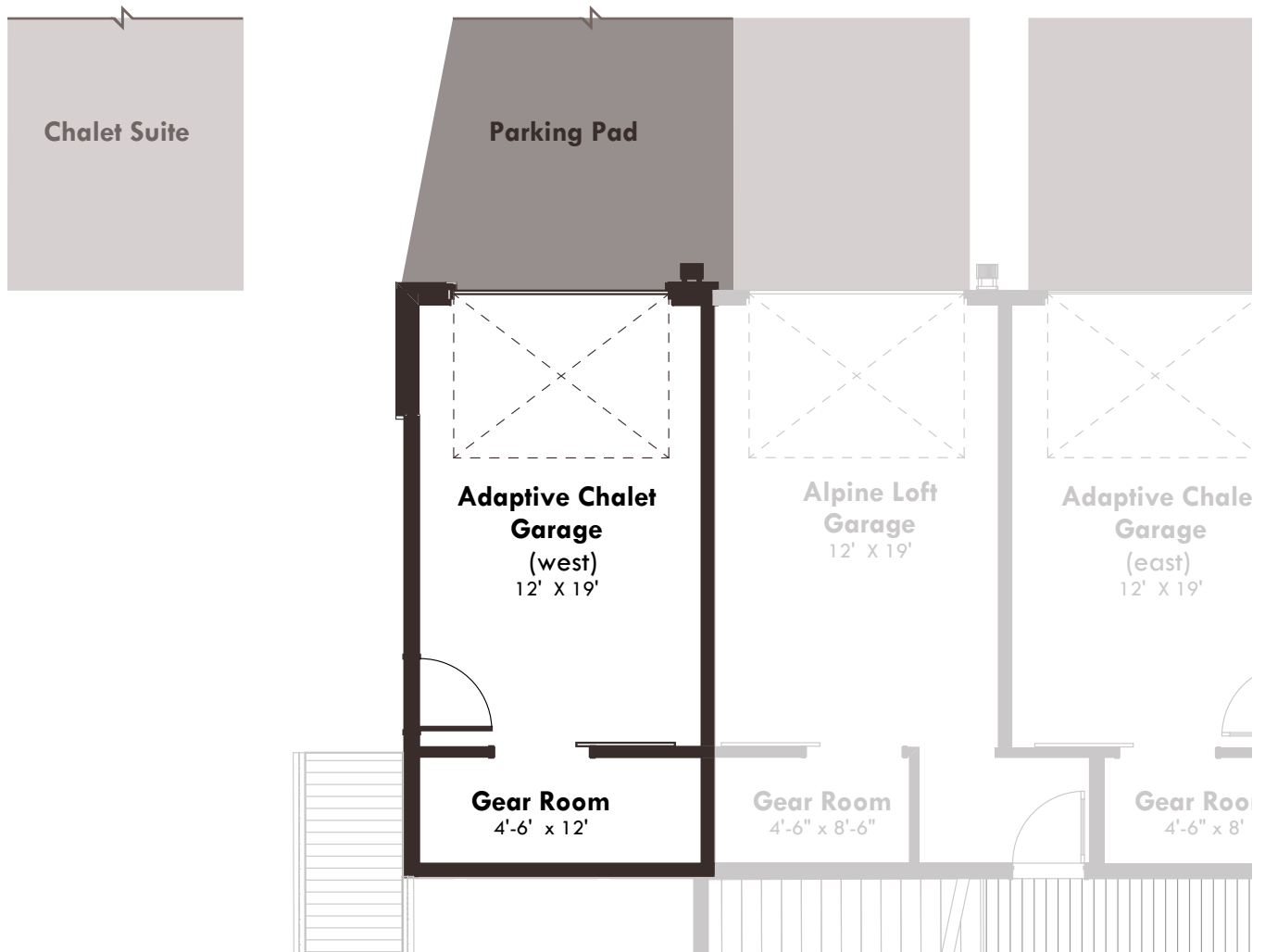
**\*FINAL DIMENSIONS, SQUARE FOOTAGE ESTIMATES, INDICATED MEASUREMENTS, FLOOR PLANS AND PROJECT CONFIGURATION MAY VARY AND MAY VARY FROM OTHER MEASUREMENT STANDARDS SUCH AS RECA'S RMS**

# THE SLOPES

AT STEWART CREEK

*Unparalleled Design*  
FOR UNPARALLELED LIVING

## Adaptive Chalet — Garage



### GROSS SQUARE FOOTAGE

UPPER LEVEL.....	825
MAIN LEVEL.....	880
LOWER LEVEL.....	225
GARAGE, STORAGE.....	280
<b>**TOTAL .....</b>	<b>2,210</b>

\*\*Estimates. Lower level includes access, storage and mechanical.

DEVONIAN

The above illustration is for information purposes only and is not a true representation of the final project. The Developer reserves the right to alter or change and or substitute appliance and lighting models, interior finishes and or materials with alternatives that are of like or similar quality. Any indication of dimensions is for information purposes only and may vary at construction and installation at the Developer's discretion. The Developer reserves the right to make changes to the floor plans, project design, specifications & interiors and exterior landscaping.

**\*FINAL DIMENSIONS, SQUARE FOOTAGE ESTIMATES, INDICATED MEASUREMENTS, FLOOR PLANS AND PROJECT CONFIGURATION MAY VARY AND MAY VARY FROM OTHER MEASUREMENT STANDARDS SUCH AS RECA'S RMS**